

Franklin County Ohio

Road Map and Street Locator
2024 - 2025

Brad Foster, P.E., P.S.
Franklin County Engineer

FRANKLIN COUNTY
BOARD OF COMMISSIONERS
Kevin L. Boyce
Erica C. Crawley
John O'Grady

Franklin County Engineer
970 Dublin Road • Columbus, OH 43215
For 24 Hour Road and Bridge Maintenance:
614-525-3072
www.franklincountyengineer.org
For Free Distribution Only

Includes The Townships Of:
Blendon • Brown • Clinton • Franklin
Hamilton • Marion • Jefferson • Madison
Milfillin • Norwich • Perry • Plain • Pleasant
Prairie • Sharon • Truro • Washington

Includes The Villages Of:
Bexley • Brice • Canal Winchester • Columbus
Commercial Point • Dublin • Gahanna
Grandview Heights • Grove City • Groveport
Harrisburg • Hilliard • Lithopolis • Lockbourne
Marble Cliff • Minerva Park • New Albany
Obetz • Pickerington • Reynoldsburg • Riverlea
Upper Arlington • Urbancrest • Valleyview
Westerville • Whitehall • Worthington

Brad Foster, P.E., P.S.
Franklin County Engineer

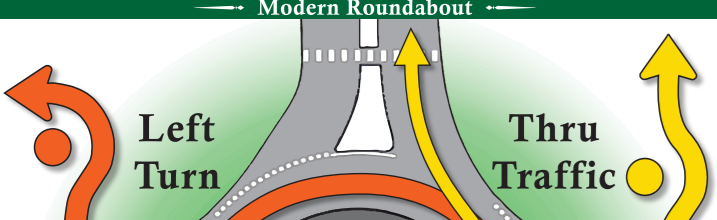
Folded maps & the atlas version of this map
are distributed free of charge at all
of the Franklin County Engineer's Offices:
970 Dublin Road 614-525-3030
373 South High Street, 19th Floor 614-225-3084
1444 Fisher Road 614-525-6780
60011A Union Road 614-525-6880
www.franklincountyengineer.org
For 24 Hour Road and Bridge Maintenance: 614-525-3072

Vision Statement
The Franklin County Engineer's Office is an agency of action, innovation, and collaboration. We provide for safe and efficient movement of people and goods from place to place by building and maintaining Franklin County's roads and bridges. We provide consistent and resourceful services such as surveying, engineering, inspection, construction, road maintenance, drainage, and snow and ice removal. We pride ourselves on consistently meeting deadlines and budgets. We are efficient with the taxpayers' dollars while utilizing innovative and unique funding sources.

The Franklin County Engineer's Office is a family-oriented organization where everyone is a leader. Our staff leads by example to ensure teamwork and growth. We ensure safety for all of our employees. We are passionate, approachable, and understanding of employee needs. We challenge employees to be the best they can be in a positive and respectful work environment. Employees enjoy a sense of accomplishment while doing important work for our community. Employees also support the community through charitable events such as blood drives, food bank fundraisers, and holiday gift sponsorships for the underprivileged. We acknowledge our employees' hard work with advancement based on performance and an excellent benefits package.

The Franklin County Engineer's Office is focused on offering a diverse and inclusive work environment where all employees are supported and have the opportunity to share ideas, to grow, and to succeed. We develop future leaders by providing training and education opportunities. Our team understands the importance of, and is committed to, utilizing small and disadvantaged business enterprises through procurement and professional services. We actively pursue public engagement and outreach to understand the needs of Franklin County.

The Franklin County Engineer's Office is determined to better the community and is accountable to our role in that betterment. We build relationships with all surrounding communities and other agencies by understanding the importance of a safe and efficient regional transportation system. The Engineer's Office collaborates with our peers through community outreach and engagement. We are a credible voice in the engineering community because of our years of experience and our willingness to face challenges head on. We strive to assist the public by being approachable and open-minded to their needs and helping them get the answers they seek.



What is a modern roundabout?
It is a one-way circular intersection with yield control of all entering traffic. Vehicles circulate counter-clockwise at speeds around 20 M.P.H. The lane use is very similar to a typical four-way intersection except for a slight circular adjustment.

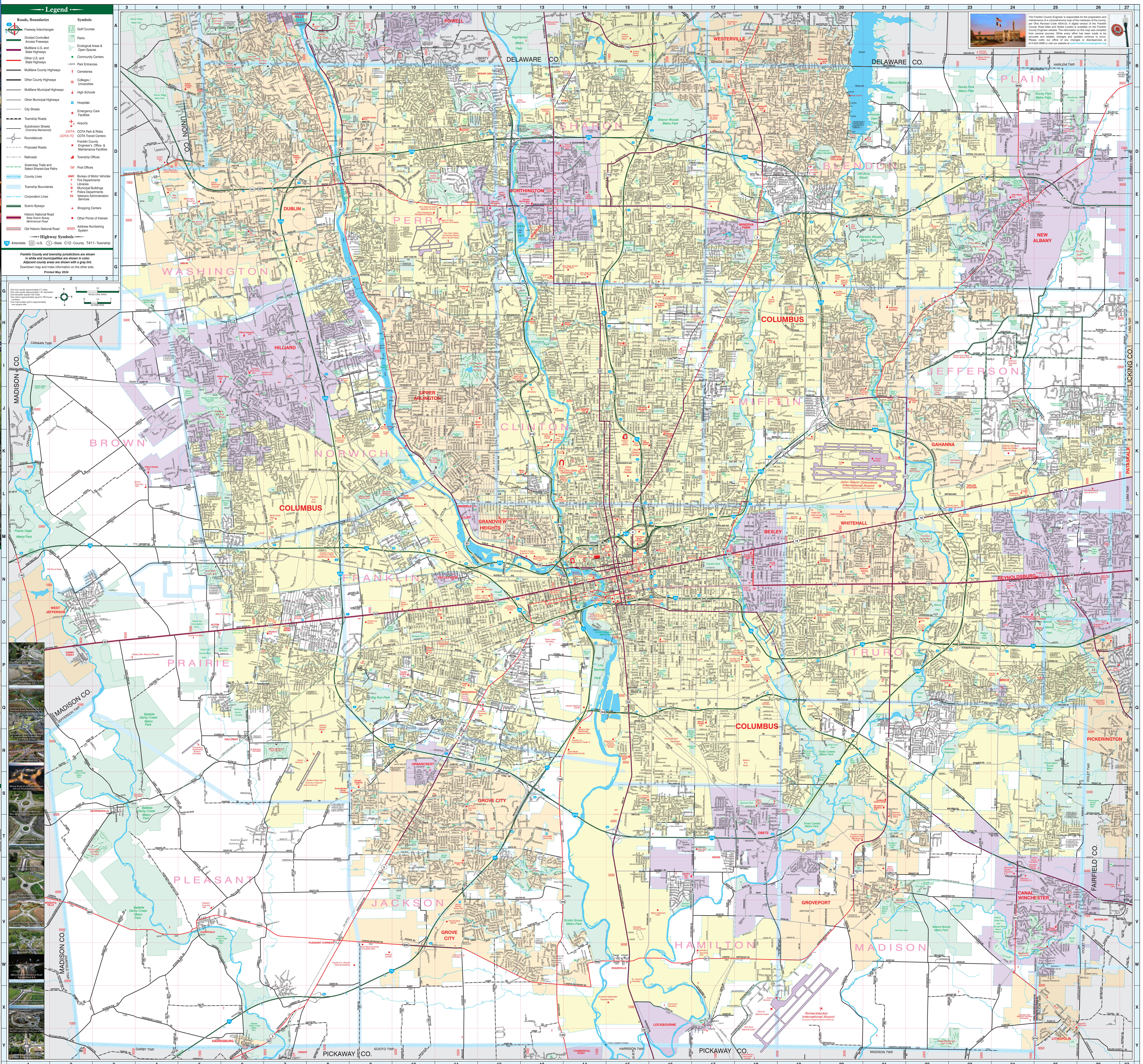
Three rules for safely driving roundabouts:

- Slow down, follow the signs.
- Yield to circulating traffic and pedestrians.
- If approaching a multi-lane roundabout, get in the correct lane before entering the roundabout.
 - Use the right lane for turning right or going straight.
 - Use the left lane for going straight or turning left.
 - Do not change lanes within the roundabout.

Why build a modern roundabout instead of a typical intersection?
Modern roundabouts are safer than traditional intersections, which have more conflict points and operate at higher speeds. Studies have shown that roundabouts provide nearly an 80 percent reduction in injury crashes since the circular layout dramatically reduces the likelihood of head-on or broadside collisions.

What are some of the other benefits of modern roundabouts?

- Traffic from all directions is slowed down to the same speed, giving motorists more time to judge and react to traffic.
- Shorter and better planned crosswalks are located away from the busy intersection.
- Reduction in pollution and fuel use since there is less idle time for motorists.
- Slower speeds and fewer stops and starts result in less traffic noise.
- No expensive traffic signals to install or maintain.



Legend

Roads, Boundaries	Symbols
Interchange	Golf Courses
Controlled Access	Parks
Multi-lane U.S. and State Highways	Ecological Areas & Open Spaces
Other U.S. and State Highways	Community Centers
Multi-lane County Highways	Park Entrances
Other County Highways	Cemeteries
Multi-lane Municipal Highways	Colleges / Universities
Other Municipal Highways	High Schools
City Streets	Hospitals
Township Roads	Emergency Care Facilities
Subdivision Streets	Airports
Roads Under Construction	COFA Park & Ride
Proposed Roads	COFA Travel Centers
Railroads	Franklin County Engineer's Office & Maintenance Facilities
Greenway Trails and Select Shared-Use Paths	Village Administration Services
County Lines	Post Offices
Township Boundaries	Range of Motor Vehicles
Corporation Lines	Fire Departments
Historic National Road	Liquor License
Historic State Road	Municipal Buildings
Other Historic National Road	Police Departments
Highway Symbols	Village Administration Services
Interstate	Shopping Centers
U.S. Highway	Other Points of Interest
State Highway	Address Numbering System
County Highway	Other Points of Interest
Municipal Highway	Other Points of Interest

Franklin County and township jurisdictions are shown in white and municipalities are shown in color. Adjacent county areas are shown with a gray tint. Downward map and video information on the other side.

Printed May 2024

The Franklin County Engineer is responsible for the preservation and maintenance of a transportation system for the benefit of the county. The Franklin County Engineer's Office is committed to providing safe and efficient transportation services. The information on this map is for informational purposes only and does not constitute a contract. The Franklin County Engineer's Office is not responsible for any changes or discrepancies in the information on this map.