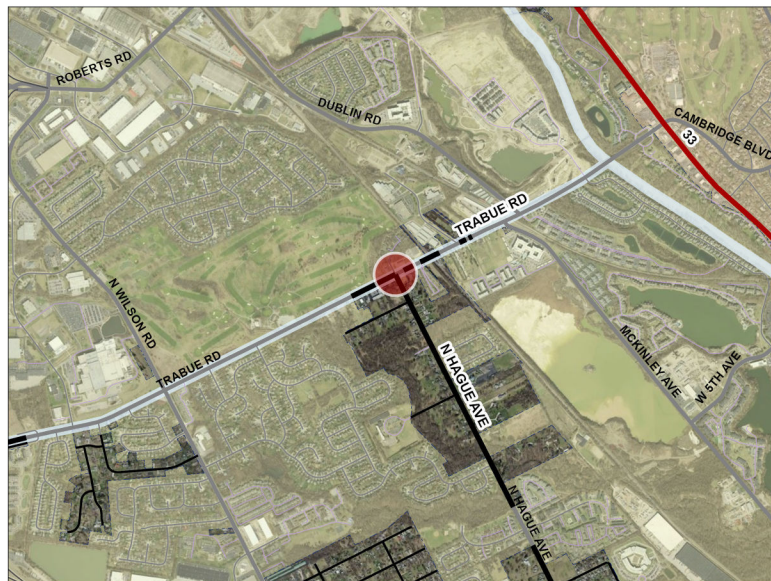
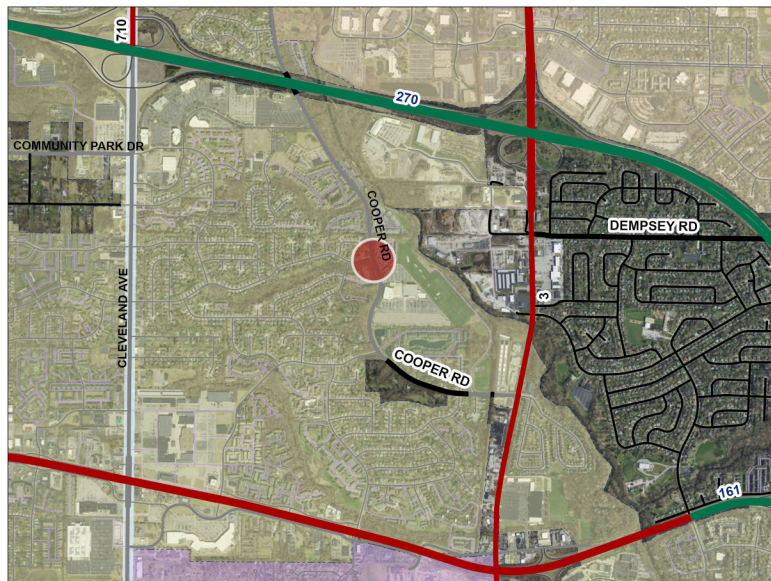


# FCEO 2025 Fall Programmatic List - Location Map



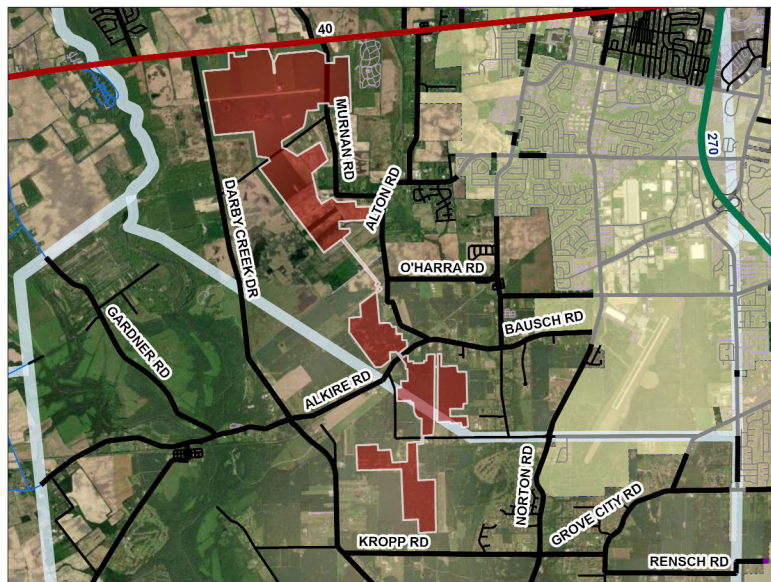
**Trabue Road at  
North Hague Avenue**



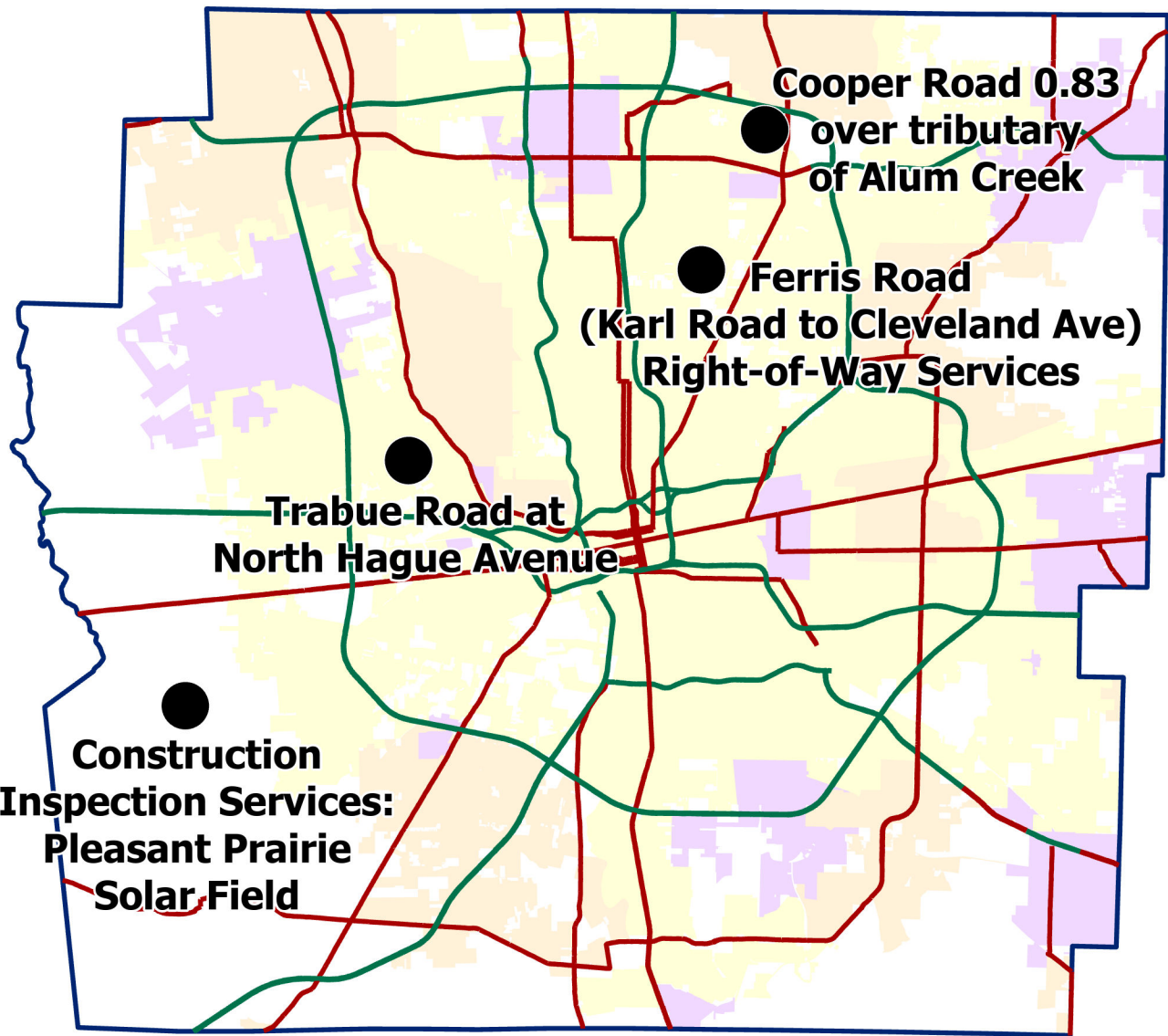
**Cooper Road 0.83  
over tributary of Alum Creek**



**Ferris Road (Karl Road to Cleveland  
Ave) Right-of-Way Services**



**Construction Inspection Services:  
Pleasant Prairie Solar Field**



**Adam W. Fowler, P.E., P.S.**  
FRANKLIN COUNTY ENGINEER  
FRANKLIN COUNTY DRAINAGE ENGINEER



**- General Engineering Services – Bridge**  
**- Various Locations**